

# Drive on Docks

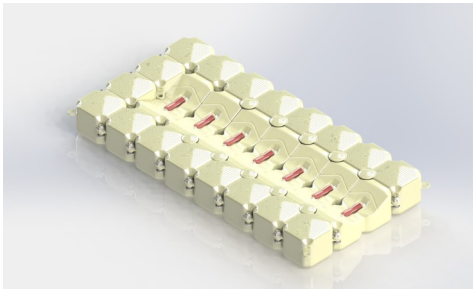


Wardle Marine Services Ltd

We offer a range of Drive on Docks suitable for craft ranging from Jet Ski's to vessels up to 10m in length

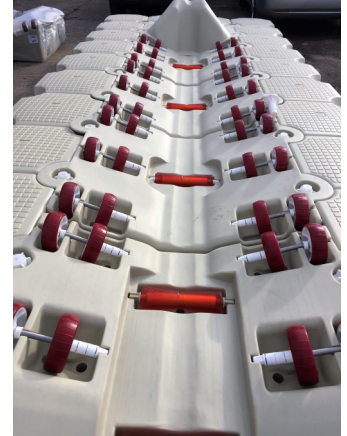
### Boatlift

Boatlifts have been designed to fully protect your 4m to 10m boat from marine conditions by lifting it fully out of the water. With a graduated entrance, bow support, and fully adjustable rollers and wheels, the boatlift provides ease of launch and recovery and a reduction in maintenance. Electric or manual winches can also be attached to this product.



### Flexiports

Flexiports are similar to the Boatlift, but it is possible to leave out some mid sections, to ensure good drainage should the dock be over a muddy, or heavily sandy floor. Both Flexiport and Boatlift can easily be extended with our modular cubes should you require further access space, or even to match your growing PWC collection.



### Modular Cube Drive on Docks

By using 'V-cubes' and our Modular Cube systems we can build drive on docks suitable for craft ranging from Jet Skis and dinghy's to vessels up to 10m in length. The cube systems are easy to install and even extend should the need arise in the future.



The cubes have a bung in the side that can be unscrewed allowing the end cubes to be filled with water tapering the dock to allow easy launch and recovery. Winches can also be attached to these systems.

Standard boat docks can be either 2.5m or 3.5m wide depending on your boat and the size of your berth., or the space your require for accessibility.

The docks are easy to reconfigure should you change the boat in the future or extend if you have a number of craft.

